



**THISTLE**  
PLASTER PRODUCTS



**GYPROC**  
PROFESSIONAL TOOLS

**GYPROC**  
PLASTERBOARD PRODUCTS

**SPEEDTAPE**

**SPEEDTAPE PRO**

**GLASROC**  
SPECIALIST BOARD PRODUCTS

**GYPFRAME**  
METAL PRODUCTS

**ARTECO**  
CEILING PRODUCTS

Artex, Thistle, Blue Hawk, Gyproc Speedtape, Speedtape Pro, Glasroc, Gypframe and Artego are all registered trademarks of BPB United Kingdom Limited part of the Saint-Gobain Group.

Artex Limited reserve the right to revise any product specification without notice. The information given is correct to the best of our knowledge at the time of publication, but it is the user's responsibility to ensure it remains current prior to use.

The enclosed information should not be read in isolation as it is meant only as guidance for the user, who should always ensure that they are fully conversant with the products, systems and specification being used and their subsequent installation prior to the commencement of work or a job.

We advise that you read and familiarise yourself with all the information contained in this literature prior to the commencement of the work, job or specification. For a comprehensive and up to date library of information visit our website at: [www.artextld.com](http://www.artextld.com)

Artex Ltd  
Head Office  
Pasture Lane  
Ruddington  
Nottingham  
NG11 6AE

[www.artextld.com](http://www.artextld.com)

© Artex April 2008 2253-GFEW-01

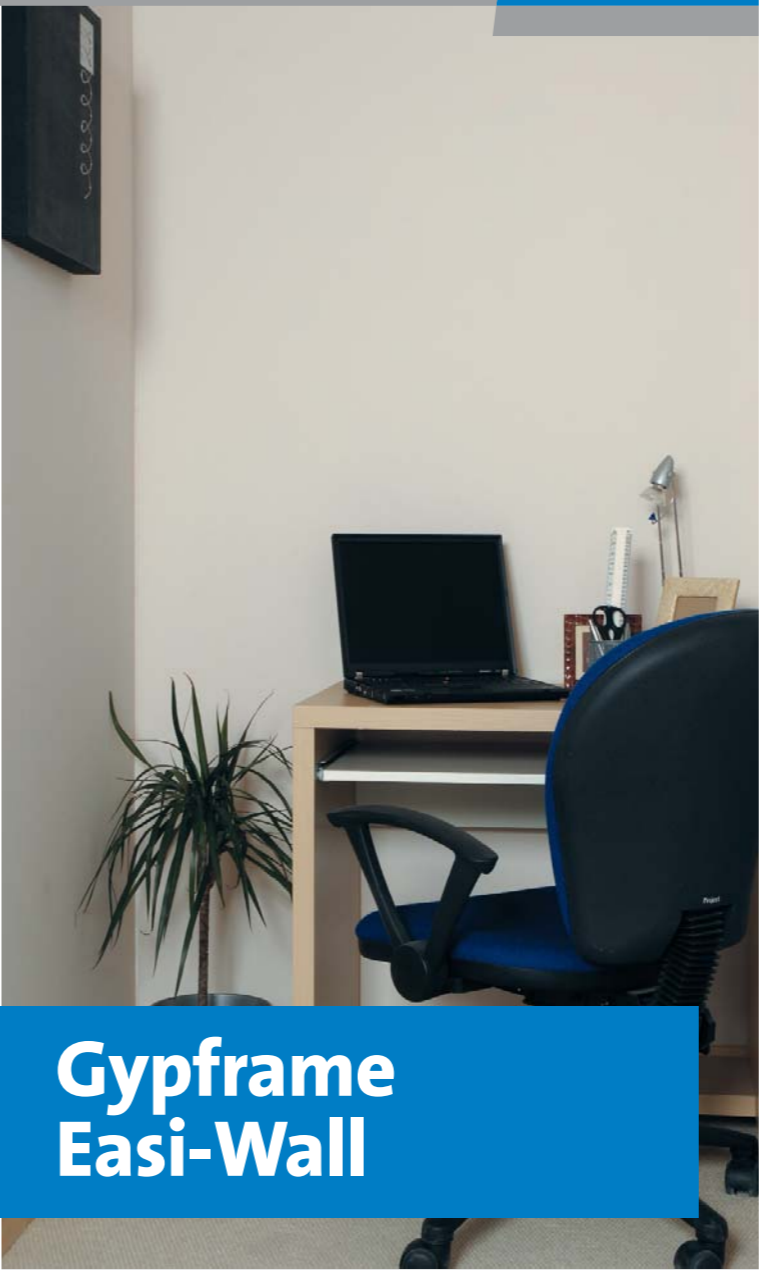
**FREEPHONE**

**0800 032 6345**

The Artex logo is a registered trademark of BPB United Kingdom Limited part of the Saint-Gobain Group.



# Gypframe Easi-Wall



# Gypframe Easi-Wall

Gypframe Easi-Wall is a simple to build metal stud partitioning kit containing lengths of Gypframe metal channel and stud and the appropriate screws for fixing the metal together.

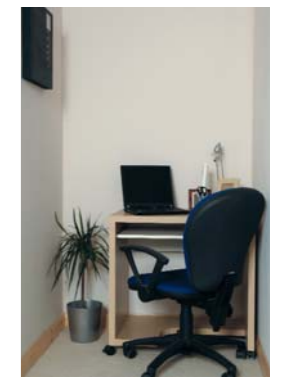
Simply slot the lengths of Gypframe metal together, fix the floor and ceiling channel to existing surfaces and fix to form a strong, reliable framework ready for boarding with Gyproc plasterboards.

The all in one kit may be used to partition-off an area or divide an existing room into two.

- Lightweight
- Will not rot, twist or warp
- Clean
- Easy to use
- All in one kit for convenience

**Ideal for:**

- Creating a walk in wardrobe
- Creating an en-suite bathroom
- Creating a new room e.g. a small office or playroom



**GYPFRAME**  
METAL PRODUCTS



## Gypframe Easi-Wall

### Gypframe Easi-Wall contains

2 x Gypframe 50 C 50 3000mm length floor and ceiling channel (marked Gypframe 50 C 50 a/n 84752)

6 x Gypframe 48 S 50 2700mm length 'C' studs (marked Gypframe 48 S 50 a/n 75537)

1 x packet of 42mm Gyproc Drywall Screws (160 screws)

1 x packet of 13mm Gyproc Wafer Head Drywall Screws (20 screws)

### Additional requirements

Suitable fixing for securing channel to floor and ceiling (dependent on type of surface affixing metal to - please refer to guidelines from fixing manufacturer)

Gyproc Aviation snips

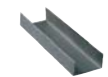
Suitable cut resistant gloves for safe handling

Suitable goggles for working overhead



### Gypframe Accessories

Should you wish to customise your partition by varying the size or adding a door, hatch or window, additional lengths of Gypframe metal are available separately. Full range of complementary products available to complete your wall.



Gypframe Classic 50 C 50 standard floor & ceiling channel



Gypframe Classic 48 S 50 'C' stud 2400mm



Gypframe Classic 48 S 50 'C' stud 2700mm



Gypframe Wafer Head Drywall Screws (Pack of 100)

# A new room or partition in 3 easy steps

## 1. Measure



Measure a line on the floor where the wall is required. Transfer this line to the ceiling by placing a Gypframe "C" stud on the outside of the line, using a spirit level to make sure the stud is vertical, then mark a line on the ceiling.



(a) Lay the first length of Gypframe 50 C 50 3000mm floor and ceiling channel along the marked line on the floor and fix channel to floor at 600mm centres with suitable fixings.

The floor and ceiling channels must be fixed into a structurally suitable element such as a timber joist or concrete floor construction.



(b) Hold the second length of Gypframe 50 C 50 3000mm floor and ceiling channel against the ceiling line and fix at 600mm intervals. Fixings should be made into floor/ceiling joists.

## 2. Frame

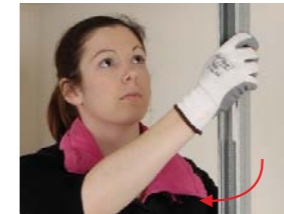


Measure Gypframe 48 S 50 2700mm 'C' Stud and cut to a neat fit using Gyproc Aviation snips or a hacksaw. Ensure Gypframe 48 S 50 2700mm 'C' Stud has the maximum possible entry to head channel (but not less than 20mm) with a friction fit.

Fix metal channel to metal studs at corners by the wall and ceiling where the channel and stud meet. Use 2 x 13mm Gyproc wafer head screw to fix at each of the 8 points.



Locate first Gypframe 48 S 50 2700mm 'C' stud, twist into position and fix to abutting wall at 600mm centres.



Twist and lock other Gypframe 48 S 50 2700mm 'C' studs at 600mm intervals. Position the studs so they all face the same way (except at wall ends). Do not fix to other metal - the fit should be through friction to allow for adjustment during the application of the Gyproc plasterboard lining.

Use a level to ensure that studs are completely vertical.

## 3. Board



Select a suitable plasterboard from the Gyproc Plasterboard range. Fix boards to frame at 300mm centres using 42mm Gyproc Drywall screws. Reduce to 200mm centres at external angles and stagger all board joints.



Cut to correct size where necessary using appropriate tools.

For partitions up to 2500mm, 12.5mm Gyproc plasterboard should be used. For partitions up to 2700mm, 15mm Gyproc plasterboard should be used.

## Which Gyproc plasterboard is right for me?

### Ideal for: Garages

**Gyproc FireLine** – used to give additional fire protection. May be used to achieve fire rating for Building regulations Approved Document Part B.



### Ideal for: Kitchens and bathrooms

**Gyproc Moisture Resistant** – gypsum plasterboard with water repellent additives in the core. Suitable for areas requiring additional moisture repellent qualities and direct tiling in wet use areas.



### Ideal for: Bedrooms and living areas

**Gyproc SoundBloc** – gypsum plasterboard with a higher density core. Designed for use where greater levels of sound insulation are required. Can help to achieve the sound reductions in residential properties set out in the Building Regulations Approved Document Part E.



### Ideal for: Insulating during refurbishment work or new build

**Gyproc WallBoard DUPLEX** – backed with a vapour control membrane for use where vapour control and plasterboard lining are required in one operation.



**Gyproc ThermaLine BASIC** – Gyproc WallBoard bonded to an expanded polystyrene insulant (both CFC and HCFC free) to achieve a basic level of thermal insulation.



For more information on Gyproc plasterboard and fixings please visit: [www.artextltd.com](http://www.artextltd.com)