

Texture

Product & Specification Guide



To achieve perfect results, choose Artex textured finish, designed and manufactured to the highest standards and supported with the strong technical back-up you would expect. The Artex brand represents quality and reassurance.

The Artex range of textured finishes can be used to create numerous effects from a smooth finish to contemporary low-relief designs for ceilings and walls.



ARTEX REGISTERED TEXTURER

Artex is proud to run a scheme called ART-Artex Registered Texturers - to promote quality texturing to homeowners and to provide sales and marketing support to members.

Members of the scheme benefit from strong marketing support, including Artex branded Yellow pages advertisements, a pattern guide and the Artex logo to use on company letters, business cards, and much more.

To find out about ART call 0115 984 9149.



Products	Preparation	Sealer	3
		Stabilex	3
		Quick-Start	3
	Smooth Finish	Smooth-It	3
	Texturing	Textured Finish	4
		Site Finish	4
		Ceiling Finish	4
		Textured Finish Ready Mixed	4
		Repair Texture	4
	Ready Mixed Solution Kits	Smooth-It	5
Roll-On		5	
Exterior	Hyclad	5	
	Force 8	5	
Tools	Mixing Tools	6	
	Caulkers	6	
	Tapes	6	
	Application Brush	6	
	Rollers	6	
	Texturing Brushes	7	
	Combs	7	
	Lacers	7	

Specification	Preparation	New Plasterboard	8	
		Concrete	8	
		Previously Decorated Surfaces	9	
		Surface Treatment	10	
	Texturing	Mixing	11	
		Joint Treatment	11	
		Perimeter Angles	10	
		Application	12	
		Patterning	13	
		Re-Patterning	14	
		Producing a Smooth Surface	14	
		Finishing	14	
		Drying	15	
		Climatic Conditions	12	
		Decoration	15	
		Repairing Minor Cracks	12	
		Coverage	12	
		General	Storage	13
			Effect of Fire	13
Conditions	13			
General Precautions	13			
Further Information	13			
Quality Assurance	13			

Preparation

Sealer

- General purpose sealer
- Increases wet edge time, particularly in warmer conditions and on large areas
- Reduces uneven porosity on a variety of surfaces
- Pigmented - helps to obliterate the background and protects board liners against sunlight

Sizes: 20 ltr, 5 ltr, 2.5 ltr, 1 ltr



Stabilex

- Universal stabilising solution
- For penetrating and binding powdery surfaces
- Improves adhesion of the finish to the surface
- Water-based formula
- Dries to a transparent finish
- Suitable for interior and exterior use

Size: 5 ltr



Quick-Start

- High speed preparation for Artex textured finishes
- For fast filling, taping and caulking of cracks and joints
- Enables one day texturing
- Mix with cold water
- Excellent tape adhesion
- Strong shrink-resistant joints

Size: 10kg



Smooth Finish

Smooth-It

- One day operation for smoothing out ceilings and walls
- Suitable for refurbishment work and application to new plasterboard
- Covers unwanted textured finishes, cracks and damage to ceilings and walls
- Very low shrinkage
- Cold water mix
- Low odour

Size: 10kg



Texturing

Textured Finish

- The original decorative textured finish for ceilings & walls
- Premium quality
- Ideal for both preparation work and texturing
- Easy to paint

Sizes: 25kg, 15kg, 10kg, 5kg



Site Finish

- Formulated for application to new plasterboards
- Stain free: no need to paint
- Easily mixed with cold water
- Revolutionary low odour formulation
- Extended wet edge

Size: 25kg



Ceiling Finish

- Formulated for refurbishment work
- Revolutionary low odour formulation
- Good build properties
- Easily mixed using cold water

Size: 25kg



Textured Finish Ready Mixed

- Moisture resistant - ideal for areas of high humidity such as domestic kitchens & bathrooms
- Ready to use
- Wipe clean
- White finish

Sizes: 10 ltr, 5 ltr



Repair Texture

- For restoration work on existing textured surfaces
- Moisture resistant
- Ready to use
- Dries to a white finish

Sizes: 10 ltr, 5 ltr



Ready Mixed Solutions Kits

Smooth-It

- Ready to use smoothing solution
- Quick and easy to use - apply straight from the tub
- Covers unwanted textured finishes, cracks and damage to provide a smooth finish
- Free spatula and Smoother application tools enclosed
- Suitable for use in kitchens and bathrooms

Size: 7.5 ltr



Roll-On

- Ready to use stipple texture solution for ceilings and walls
- Quick and easy to use - apply straight from the tub
- Free stipple roller enclosed
- Disguises imperfections
- Dries white but may be painted if required
- Suitable for use in kitchen and bathrooms

Size: 5 ltr



Exterior

Hyclad

- Exterior textured finish for masonry
- Flexible and crack-resistant
- Tough and weatherproof
- Available in Brilliant White, Cream and Magnolia

Size: 15 kg bucket



Tools

Mixing Tools

- For fast, efficient mixing

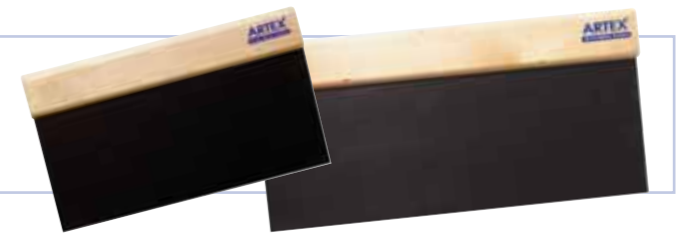
Hand Mixer, Drill Mixer, Mixing Bucket 20 ltr



Caulkers

- For filling, jointing and preparing

200mm, 250mm, 300mm



Tapes

- For plasterboard jointing and repairing cracks

White: 180m, 90m, 25m / Kraft: 180m, 90m



Application Brush

- For fast efficient application of texture

Laying-on Brush - Block



Rollers

- For easy patterning of walls and ceilings

Bark Standard Roller - 180mm
Foam Rollers - Bark, Stipple, Diamond



Texturing Brushes

- For creating a wide range of textured effects

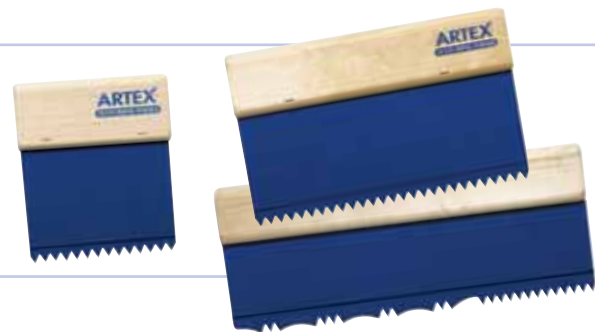
Stipple Brushes –
Standard 150x100mm, 200x150mm,
Tradesman 150x100mm, 200x150mm, 330x330mm



Combs

- For creating artistic combed patterns

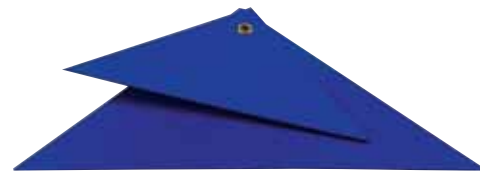
Standard – 90mm, 170mm, 250mm, 300mm
Feature – Flower 170mm, Rose 90mm
Hybrid – Flower 250mm, Rose 250mm



Lacers

- For smoothing tips of heavier, random textures

Lacer Set – 210/140mm
Tradesman Lacer – 290mm



New Plasterboard

The Artex Jointing System, when applied to plasterboard, provides very strong joints to produce a reinforced finish. Artex textured finish can be applied as an alternative to a skim plaster and two coats of emulsion.

Boarding Specification

Square edged wallboard is specified for texturing work, fitted in accordance with the manufacturers recommendations for plastering or direct decoration, except that a nominal 3mm gap should be left between all meeting edges.

If the board liner is likely to be exposed for any length of time before texturing, an application of Artex Sealer is recommended as early as possible.

CAUTION: All wet trades (eg plastering and screeding), should be finished and dry before texturing work begins.

Concrete

It is difficult to give a specification to cover all types and standards of concrete and the following information, which should help to achieve satisfactory results in most cases, is intended as a guide only.

Cast In-Situ

Main Contractor

All surfaces to be decorated must be clean, sound and free from contaminants such as mould-oil. Buff down all board and shuttering marks. Gaps, imperfections, differences in levels over 3mm, and areas where aggregates show should be made good with a suitable bonding plaster and allowed to dry.

Texturing Subcontractor

Seal the entire surface with Artex Stabilex and allow to dry.

Fill blow holes and stepped levels less than 3mm with a caulking mix of Artex textured finish and allow to dry.

Caulk out the entire surface with Artex textured finish to produce a smooth level surface then either:

- allow to firm, but not dry, and texture as required, or
- allow to dry, seal with Artex Stabilex and allow to dry, then texture as required.

When using Artex Ready Mixed Textured Finish, option b) must be followed.

Pre-cast Slabs or Beams

Main Contractor

Fill all V-joints flush, and make good gaps, imperfections and differences in levels over 3mm with a suitable bonding plaster and allow to dry.

Texturing Subcontractor

As for cast in situ, but tape over all filled V-joints with Artex Joint Tape during the first caulking stage.



Previously Decorated Surfaces

All the normal rules of re-decoration apply when texturing. It is essential to prepare the surface to be flat, sound, clean, dry and free from dust or friable materials.

Ceiling Tiles

Remove tiles and the adhesive underneath.

Wallpaper

Remove all wallpaper and paste. Thoroughly wash with warm water.

Paint and Distemper

Remove all traces of distemper or whitewash, even where overpainted, by washing and scraping.

Flaking Paint - Scrape off and ensure the edges of any remaining areas are sound.

Emulsion - Check adhesion and remove any suspect areas.

Gloss/Eggshell/Flat Oil - Check adhesion, removing any suspect areas. Lightly sand to remove shine. Clean off all surface dust.

Grease/Nicotine/Smoke

Wash off with a weak solution of mild detergent in warm water, then rinse the surface with clean water.

Lath and Plaster

In some cases, preparation may be extensive and re-boarding can often be more economical. The plaster must be removed from the laths and new plasterboard fixed over using longer nails or screws to adequately penetrate the timbers behind.

Plaster Skim over Plasterboard

To minimise the risk of subsequent cracking, all joints should be identified and then taped whether or not cracks are evident. Unfortunately there will always be a slight risk of subsequent cracking due to the method of board fixing and the original joint treatment.

Damaged Plasterboard

Cut out the section of damaged board beyond any broken core to the nearest supports. Using additional timber as required, fit a new section of board. Reinforce the repair edges with Artex Joint Tape, bringing the new section level with the existing ceiling at the same time. Continue as for re-patterning (see page 12)

Tape Delamination

Remove all suspect tapes, together with underlying material and any weakly adhering texture. Bed new tape into the exposed joints. Continue as for re-patterning (see page 12)

Repaired Areas/Holes

The edges of repaired areas should be taped and caulked. Stepped levels of less than 3mm should be caulked out with Artex textured finish as necessary to disguise them.

Cracks

Hairline cracks - brush in mixed Artex textured finish, or a flexible decorators filler.

Large cracks (wider than 3mm) – fill with a thick mix of Artex textured finish or Artex Quick Start (see Surface Treatment) and tape as for plasterboard joints.

Heated Surfaces

Where surface temperatures are likely to exceed 35°C texturing is not recommended.

Surface Treatment

Absorbent backgrounds such as repaired areas, new plaster, jointed plasterboard and surfaces stripped of wallpaper or paint, should be sealed with Artex Sealer diluted with an equal amount of water. This reduces the absorbency of the background and improves the performance of the finish, particularly in warmer conditions and on large areas.

Backgrounds which remain friable after the best possible preparation should be treated with Artex Stabilix instead of Artex Sealer.

When using Artex Quick Start to repair cracks on a previously painted surface, a suitably diluted PVA bonding agent should be used instead of Artex Sealer. **Do not use PVA for any other purpose.**

Where there is evidence that water soluble material is likely to bleed through from a fully prepared background, a proprietary oil-based primer sealer should be used instead of Artex Sealer.

N.B. Since Artex has no control over varying conditions and background specifications, no guarantee of results can be given. All surfaces must be completely dry before applying any sealer or primer to avoid delamination.



Mixing

Powder

Pour the required amount of water, using cold water above 5°C, into a clean bucket – about 0.5 litres of water for every 1kg of powder.

Add the powder to the water slowly and mix to a thick, creamy consistency with an Artex Mixing Tool. Leave to stand for 10 minutes, then remix to a smooth paste. Adjust as required for filling joints and caulking.

For texturing work, gradually dilute with cold water – testing the consistency to avoid over-thinning.

- For rich textures add approximately 100ml of water for every 1kg of powder and mix to a creamy consistency.
- For light textures add approximately 200ml of water for every 1kg of powder and use as an almost free-running mix.

If the mix begins to set before it can be applied, discard the material, clean the container and tools thoroughly, and mix a fresh batch.

Ready Mixed

This product can be applied straight from the bucket. For a lighter texture, dilute with up to 10% clean cold water.

Joint Treatment

Filling, Taping and Pre-caulking

Briefly immerse lengths of Artex Joint Tape in water, shake off any excess moisture and leave for 5 minutes to ensure the paper is supple and evenly moist.

Using an Artex Caulker, spread a band of caulking mix along the joints and into the gaps between the boards.

Apply the dampened joint tape centrally along the band of material, bedding it firmly and removing any excess material with the caulker. Spread a thin layer of material over the joints as required and fill all nail heads. Leave until thoroughly dry (12 - 24 hours).

Caulking

Apply a further caulking coat in a wide band over the taped areas, smoothing and feathering out edges to hide the tapes and joints and provide an essentially flat surface. Caulk out all nail heads again then, either:

- allow the caulked out areas to firm up but not dry before texturing or,



- allow the area to thoroughly dry and seal the entire surface with Artex Sealer. Once the sealer is dry, texture as required.

N.B. When using Ready Mixed Textured Finish, the substrate must be sealed. In all other cases, the use of Artex Sealer is at the discretion of the individual texturer.

One Day Jointing & Texturing system

Artex Quick Start can be substituted for Artex powders when taping and pre-caulking. This material sets in around 90 minutes and can then be caulked and textured. Note – it may be necessary to paint the completed work to achieve an even finish.

Perimeter Angles

Treatment to, or finishing of, perimeter angles is not normally the responsibility of the texturer.

New Plaster Walls

Do not tape around angles. Coving or plaster cornice, fixed prior to texture work.

Existing Plaster Walls

Care should be taken when fixing to minimise the gap between the plasterboard edges and the wall. Gaps over 3mm should be flush filled with a suitable plaster filler and allowed to dry. Then, during the normal joint taping operation all perimeter edges should be taped. Tape must not be applied around the angle, but should butt lightly to the wall.

Drylined Plasterboard Walls

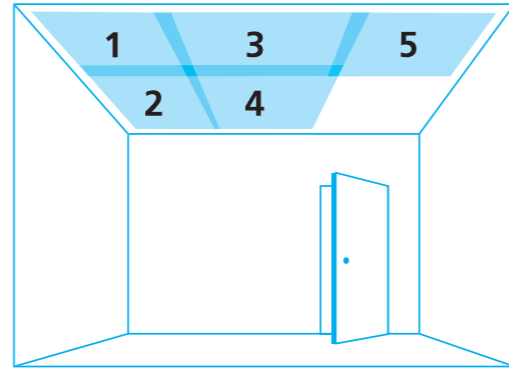
The wall and ceiling angle should be taped. This is an accepted part of the dryliner's responsibility and should be left finished.

Application

For the best results and a longer working time, keep the room cool, make sure the background is well sealed and eliminate draughts by closing windows and doors.

Apply a generous, even coat of the mix by brush or roller in a band about 1 x 0.5 metres across the ceiling width or down the wall (with roller patterns on walls, a single band can be applied from ceiling to skirting). Texture this area and draw a brush margin (13-25mm) using a small brush along the edges of the ceiling or wall to form a narrow border. Apply a second coat of the mix and blend in with the previously textured area, again forming the margin line.

Continue in this way, completing successive bands until the whole area is finished. Work quickly but carefully to make sure bands can be blended while the material is still wet.

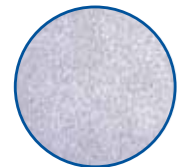


Patterning



Stipple

Lightly bounce an Artex Texturing Brush on the coated surface, bringing it away cleanly to avoid drag marks. To achieve a completely random pattern, turn the texturing brush slightly between each bounce.



Peel

As Stipple, lace back using an Artex Lacer Set before the material firms up.



Granite

Use the Artex Stipple Foam Roller to achieve a light stipple effect. Lace back using an Artex Lacer Set before the material firms up.



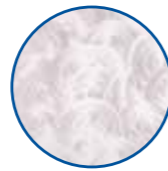
Broken Leather

Cover an Artex Texturing Brush or sponge with polythene. With a dabbing and half twist motion of the wrist in both directions, bounce the polythene face randomly across the surface.



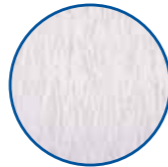
Swirl

Place the Artex Texturing Brush on the surface, spin the brush and pull it away. Ensure the pattern is random and does not form regular lines.



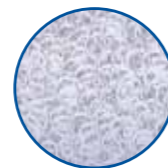
Scroll

Twist and turn an Artex Texturing Brush, dragging it across the surface to form a random pattern.



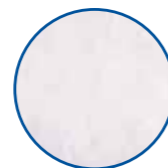
Shore

Apply textured finish evenly with an Artex Laying-On-Brush. Use the brush to stipple, rocking it from side to side in a zig zag motion in bands across the surface. Wait for material to firm up, then lace back using an Artex Lacer Set.



Medusa

As stipple but while the material is still wet make a series of random circular strokes using fingers.



Stonewall

Brush on a thick layer of textured finish in a cross hatch effect. Wait for the material to firm up and then lace back using an Artex Lacer Set.

Roller patterns

Before texturing, apply a light coat of material to the pattern roller. Run the roller lightly up and down the coated wall surface to ensure an even spread of material. Finish each strip with a continuous run from top to bottom.

Other patterns

Training courses are available. See page 13 for full details.

Re-Patterning

To achieve a surface ready for decorating with a new pattern, first ensure that the existing textured finish is firmly bonded to the background.

- 1) Remove any weakly adhering material and make sure the surface is dry, free from dust, grease or other contaminants.
- 2) Lightly dampen the surface and remove any prominent texture 'nibs' using a stripping knife.
- 3) Apply Artex Stabilex liberally, to seal the surface, and allow to dry.
- 4) Apply a caulking mix of Artex textured finish over the surface with a caulking blade and allow to firm up, but not dry. Repeat this operation as necessary to disguise the original pattern. The depth of the existing pattern will dictate the number of caulking coats required.
- 5) Depending on drying conditions, texturer skill and size of area, either:
 - a) allow the caulking to firm to the touch - but not dry - and texture as required, or:
 - b) allow the caulking to dry, seal with Artex Stabilex, allow to dry and texture as required.

N.B. Pin-holing in the new textured pattern can sometimes occur. Where possible, method a) is preferred. When using method b), ensure that the final caulking coat is thoroughly dry before sealing with Artex Stabilex - which should then also be allowed to thoroughly dry to minimise pin-holing.

Producing a Smooth Surface

To produce a smooth surface for painting, follow the instructions for Re-Patterning up to stage 4 and use Artex Smooth-It. To achieve a smooth finish, take care with the final coat and use a thinner consistency. When dry, minor imperfections can be lightly sanded. Remove any dust before applying a final liberal coat of Stabilex. When dry the surface is ready for painting.

Finishing

Patterns may be either laced (slightly smoothed) using an Artex Lacer Set or left natural, depending on the desired effect.

Lacing

Use an Artex Lacer Set to reduce the sharpness of the peaks of heavier patterns by lightly smoothing the material as it begins to firm. The lacer should be kept damp with a wet sponge and clean water and should be held at a low angle to the surface.

To ensure best results, care should be taken with brush margins, cleanliness and lacing. Splashes should be cleaned off as they occur and all surfaces left clean. All tools should be washed in warm (not hot) water as soon as possible.

Drying

Ventilate immediately on completion of texturing so that the finish can dry as soon as possible to avoid degradation. Drying time should not exceed 3 days.

Uneven Drying

Weather and site conditions, that are beyond the manufacturer's control may sometimes result in uneven drying, producing colour irregularities in the finish. This can be remedied by over-painting with emulsion, following the manufacturer's instructions for application to porous surfaces.

Climatic Conditions

Winter - When dry, Artex textured finishes are not affected by natural changes in temperature. However, application and drying should not be carried out in temperatures below 7°C.

Summer - High temperatures (above 27°C) can accelerate drying and cause cracking / crazing of the finish.

Artex products are not suitable for application to surfaces that will be subjected to continuously humid conditions, such as communal showers, changing rooms and swimming pool areas.

Decoration

To produce an even finish or to freshen the appearance it is recommended that the textured finish is painted with a good quality emulsion paint. Ready Mixed, or previously painted textured finish, can be cleaned by sponging off prior to painting. Previously unpainted Artex textured finish must be treated following the paint manufacturers' instructions for application to porous surfaces.

Repairing Minor Cracks

Repair by dampening the area around the crack and filling with a thick layer of textured finish or a flexible decorators filler. Blend the material into the existing pattern, and remove any surplus using a clean wet brush.

Coverage

Coverage depends on the substrate, type of application and depth of texture pattern.

As a guide however:

Powder coverage per kg

- Joint Treatment – up to 2 m² of board area
- Preparing Concrete – up to 1.3 m²
- Texturing – up to 2 m²
- Smoothing out – up to 1 m²

Ready Mixed coverage per litre

- Undiluted – up to 1.6 m²
- Diluted (at maximum dilution) – up to 2.4 m²
- Roll-On – up to 2 m²
- Smooth-It – up to 0.6 m²

Storage

Powder – store in dry conditions
 Liquids – protect from temperatures of below 5°C, or above 35°C

Effect of Fire

When applied to plasterboard or any non-combustible background, interior Artex textured finishes provide a class “O” surface in accordance with the requirements of National Building Regulations. This permits the unrestricted use of these materials as a ceiling or wall finish.

Conditions

As the conditions and methods of use are beyond the manufacturer's control, no responsibility can be accepted for failure of products when not used as directed. The suitability of products for use in specific situations should be established by the user before application.

General Precautions

Mix in well ventilated conditions. If any Artex product gets into eyes do not rub but wash immediately with plenty of clean, warm water. If symptoms persist, seek medical attention. Avoid excessive material on skin. Wash hands after use. Detailed Health and Safety information is available on request.

Further Information

Artex has experienced representatives available to provide specifiers and product users with skilled assistance in their choice and use of Artex products. Information about other products in the Artex range is available from the Artex Customer Services Department, Tel: 0115 945 6100.

Training Courses

A range of training courses are available for both beginners and the more experienced tradesperson. The training courses are held at East Leake and Enrith and include Brush Work (2 days), Decorative Plaster Mouldings & Paper Faced Coving (1 day), and Smoothing Out (1 day). If you would like to book or get further information on these courses, please call The Drywall Academy on: 08705 456123

Quality Assurance

Artex is a quality assured company registered with BSI Certificate No. FM 02105



Artex offers a range of decorative plaster mouldings and paper faced cove with designs suitable for use in any type of home.



Range	Length metres	Cove		Ceiling Rose
		Profile mm	From wall /ceiling mm	dia. cm
Georgian	2	127 127	84 C 84 C	38 / 54
Roman	2	127 127	84 C 84 C	38 / 54
Grecian	2	127 127	84 C 84 C	38 / 54
Adam	2	127 127	84 C 84 C	38 / 54
Harmony	1.25	100	76 W 60 C	36
Expression	1.25	100	76 W 60 C	36
Chalfont	1.25	100	70 W 70 C	38 / 53
Richmond	1.25	100	76 W 60 C	36 / 53
Canterbury	1.25	100	76 C 60C	36 / 53
Cavendish	1.25	100	76 C 60C	36 / 53
Sculptured	2/3	135	92 W 84 C	54
Paper Faced	2	100 127	67 W 67 C 84 W 84 C	54

All dimensions are approximate



2245-ATPSG-01



Pasture Lane, Ruddington,
Nottingham NG11 6AE
Tel: 0800 032 6345
Fax: 0115 945 6041
www.artexltd.com

The Artex logo is a registered trademark of BPB United Kingdom Limited part of the Saint-Gobain Group